




We Put Concrete  
Into Shape



We are a part of Hitech Concrete Products L.L.C., a subsidiary of Trojan Construction Group. Established in 2006, we cater to the production of masonry blocks to the ever-growing building industry in the United Arab Emirates. Our facility exceeding 1,000,000 square feet is situated in the Industrial City of Abu Dhabi - 2 (ICAD 2) in Mussafah.

We have invested in the latest, fully-automated HESS MULTI-MAT System from Germany – the pioneer in supplying block manufacturing machinery throughout the world, for making Blocks and Paving Stone. We produce approximately 160,000 masonry blocks/day of various specifications and deliver it using our own trailers, with offloading facility.



**HITECH**  
CONCRETE PRODUCTS

**BLOCKS AND PAVING TILES PRODUCTS**



“

We are committed to revolutionize the construction globe to excellence.

”

## CONTENTS

- 04 GENERAL MANAGER'S MESSAGE
- 05 WHO ARE WE
- 06 VALUES
- 07 CORE VALUES
- 09 RANGE OF PRODUCTS
- 10 COMPREHENSIVE PRODUCT SPECIFICATIONS
  
- 12 **BLOCKS**
- 17 **INTERLOCKING TILES**
  
- 21 BLOCKS AND TILES PROJECTS
- 30 OTHER PROJECTS FROM HITECH PRECAST
- 31 QUALITY POLICY
- 32 HEALTH, SAFETY AND ENVIRONMENT POLICY
- 33 OUR PEOPLE

# HITECH

CONCRETE PRODUCTS



## GENERAL MANAGER'S MESSAGE

Here at Hitech, we are dedicated to delivering exceptional precast concrete solutions to our customers in the UAE and beyond. From the initial design development stage, through to the final walkthrough, Hitech's knowledgeable team brings experience and innovation to every undertaking.

We have delivered our first class products to virtually every type of project. We create strong, lasting partnerships with our customers and apply passion, skills, and reliable expertise towards manufacturing quality cement products, as well as providing superior customer service. We let our actions show why we lead the industry in our domain. We strive to be number one in our field. The Hitech team will always ask – “How can we help you?”

We are also:

- Educators dedicated to providing opportunities and feasibilities that promote the advancement of the precast industry.
- We are pioneers in the UAE in setting up successful mobile precast factories that can be designed to serve and suit projects with the best economical and value engineering setups.
- A member of the Trojan Construction Group since 2006. The Trojan Construction Group of companies have set the standards and benchmarks for expertise on uncompromising quality in the construction and building material industry. We provide general contracting, civil, MEP, infrastructure, design and build, and precast concrete products.

**Samir Koblawi**  
General Manager

# WHO ARE WE?

Since our launch in 2006, we at Hitech have focused on our capabilities, catering to the production of precast concrete products and hollow core elements, GRC, masonry blocks, interlocking tiles, kerbstones, etc. for the ever-growing building industry in the United Arab Emirates.

As one of the leaders in the field, we supply high quality and industry-leading installation and construction services designed to meet the needs of the industry – shifting from traditional to precast system. We also offer full product and service package with the ability to design, detail, manufacture, and install a diverse range of precast products – from start of design till execution.

We also have an in-house laboratory – completely equipped with the latest instruments and equipment – to test and ensure product quality. We follow local and international standards for design, production, delivery, health, safety, and environment. We have been certified with: ISO 9001:2015, ISO 14001:2015, and OHSAS 18001:2015, and by OSHADSF, Abu Dhabi. Hitech is also a proud member of several international institutes and associations such as PCI, ACI, GRCA and IPHA.

## Hitech has completed the following projects locally:

Emirates housing development in Jebel Hafeet, Al Ain, Ain Al Fayda - Emirati housing programme, Mudon development Phase 3, MBR Dubai Hills Estate Maple - 646 town houses, Yas Acres townhouses and apartment, Golf Place - 57 villas at Mohd. Bin Rashid City and Dubai Hills Estate, Al Falah Town Center (villas and mosque) - Al Falah development, Abu Dhabi.





## VALUES

### VISION

To become the leading precast concrete company in the UAE, we continuously strive to exceed our client's expectations - be it in terms of competitive pricing, lead time to delivery or quality of products achieved through a culture of safety and empowerment.

### MISSION

We strive to lead and deliver quality precast solutions through safe, innovative and sustainable practices using our expertise in the design, manufacturing and installation of all precast concrete components. We strive to conduct and maintain all our business transactions with the highest levels of integrity, honesty, competitiveness and fairness, focusing on our customer's needs and continuously improving our processes and services. We aim to continuously be a positive integrated part of the Trojan Construction Group, maximizing the returns to our shareholders and giving our employees the opportunity to be rewarded, trained and grow professionally.

# CORE VALUES

## **Prosperity**

Create value for all partners and stakeholders.

## **Productivity**

We are committed to the excellence, intelligent planning and focused efforts of our team.

## **Reliability**

Is the cornerstone of everything we do.

## **Commitment**

We are dedicated to the satisfaction of our customers, the wellbeing of our co-workers and the success of our company.

## **Sustainability**

It is all about survival, to overcome the unexpected.

## **Integrity**

Respect everyone and treat them as you would like to be treated and do what you say you are going to do.

## **Teamwork**

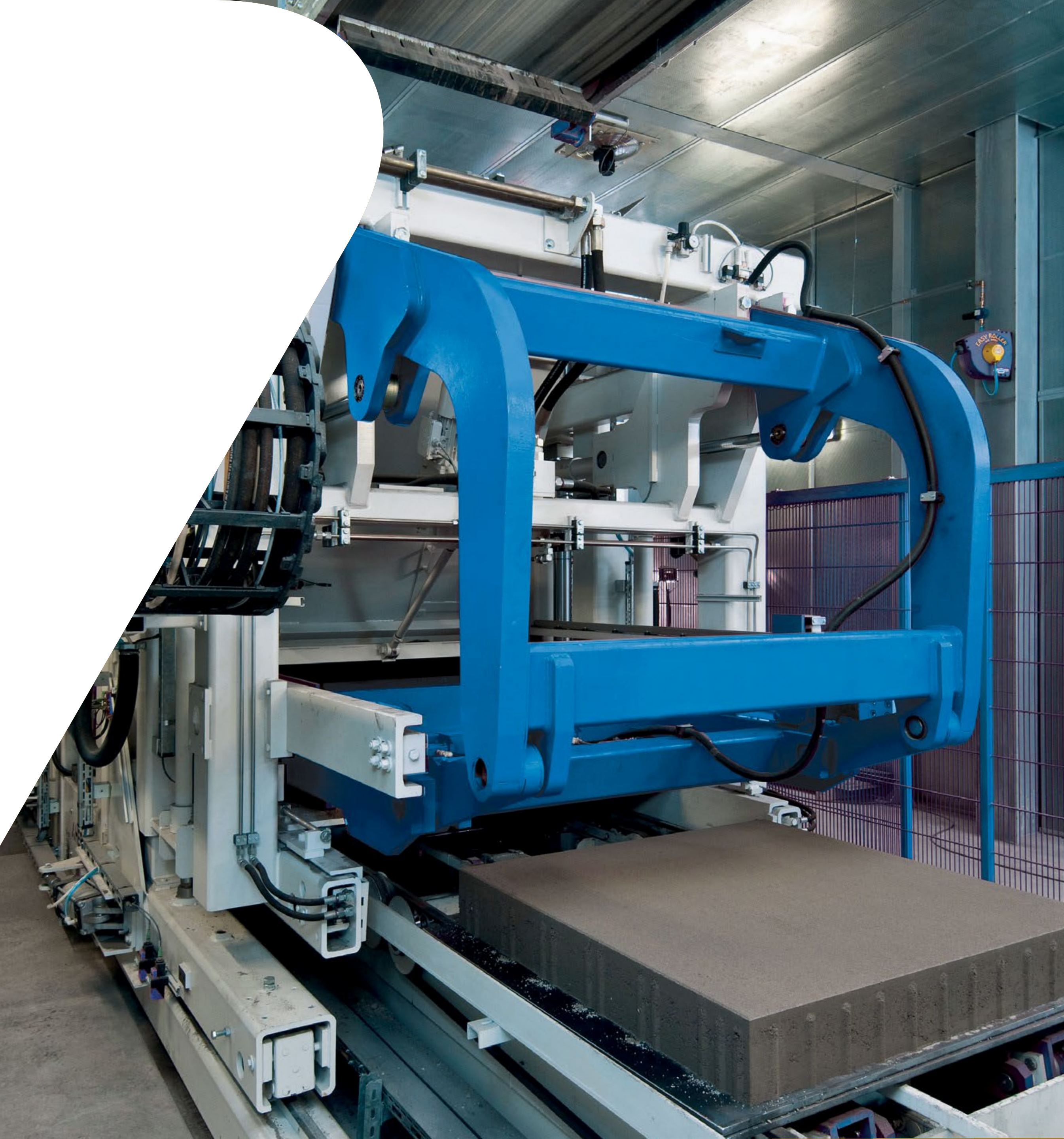
Work smart, work hard, work together.

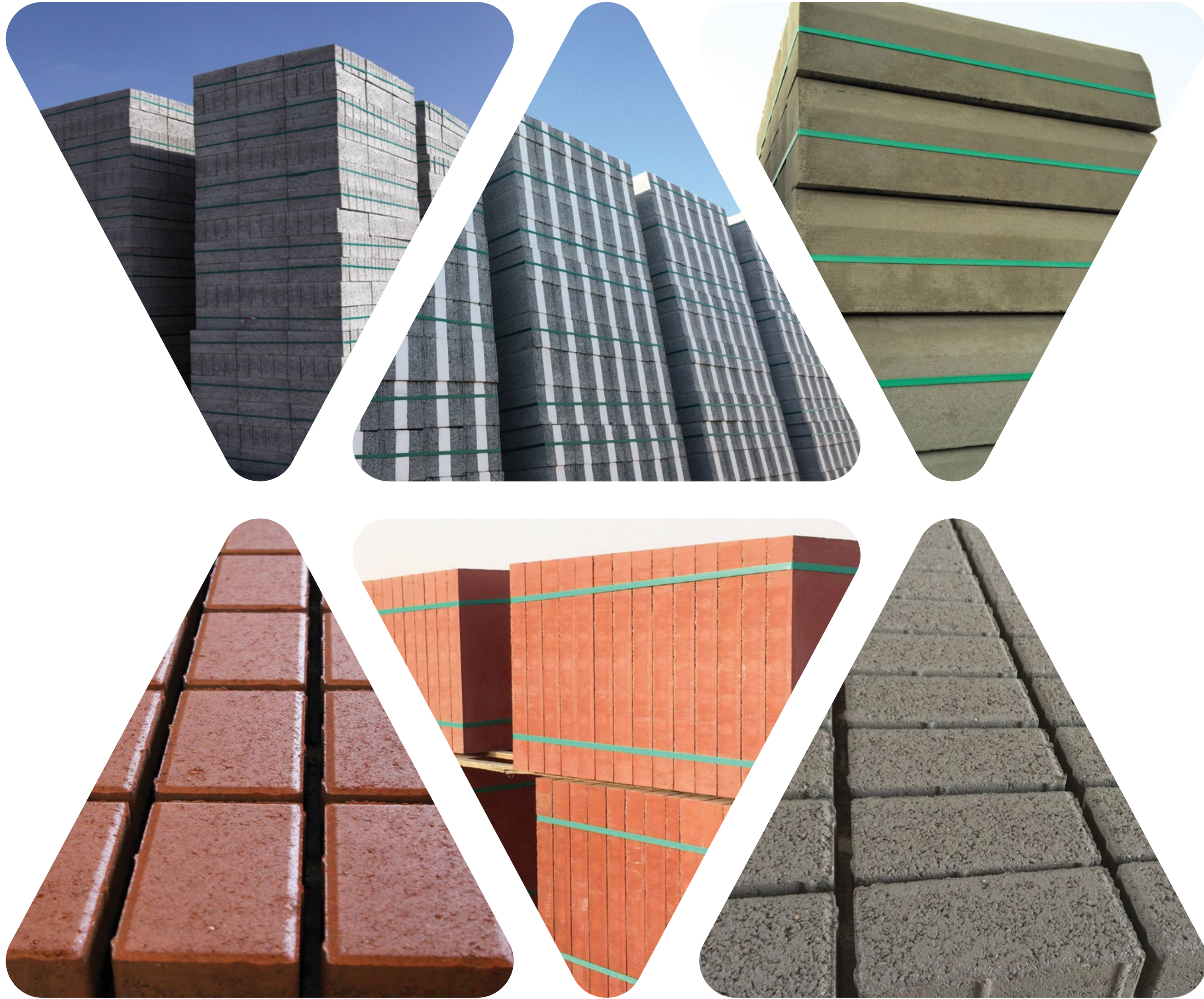
## **Innovation**

Built upon entrepreneurial values, we believe everything can be innovated.

## **Safety**

Look after yourself, your team and others around you.





# RANGE OF PRODUCTS

- Hollow Blocks
- Solid Blocks
- Hordy Blocks
- Isolated Blocks (Thermal Blocks)
- Kerbstone
- Interlock Paving Tiles
- Wet Pressed Tiles
- Shot Blasted Tiles (Wet and Semi-wet)

# COMPREHENSIVE PRODUCT SPECIFICATIONS

All products of Hitech Concrete Products L.L.C. comply with specifications stipulated in local order of Abu Dhabi Municipality and BS 6073 standards.

## Materials

Crushed limestone aggregates are obtained solely from Ras Al Khaimah and Fujairah. Regular examinations are made at the quarries, and all deliveries are examined for grading and cleanliness. The cement used is manufactured locally and delivered to the factory in bulk pressure carriers. Weekly test certificates are obtained to confirm with the BSS 12 or BSS 4027 standards, depending on the type of cement.

## Chemical Analysis

Salt contents are contained within normal recommend limits, as good practice for producing structural concrete. Typical salt content values of concrete blocks (% by weight of dry sample).

## Compressive Strength

While Hitech Concrete Products L.L.C. can manufacture custom made blocks, the standard ranges of compressive strength are:

Solid Blocks 7.5 and 12.5 N/mm

Hollow Blocks from 5.0 N/mm up to 10 N/mm

Hordy Blocks 3.0 and 7.0 N/mm

\*\*Averages are considered here for interlocking tiles; Hitech is capable of delivering special specifications which exceed the municipality requirements. We are able to have more than 65 N/mm for the compressive strength, and less than 1% water absorption for special projects, and high salt content soil areas.

Normal specs will be 52 N/mm, and less than 5% water absorption.



### Fire Resistance

Referring to the code of practice for walling, brick and block masonry CP121: part 1:1973. The aggregates used in our Concrete Blocks conforms to class 2 definition referred to in the Code; being crushed natural stone, other than limestone. For example, in the case of non load bearing single leaf walls, the following could apply (The values given below are in respect to block thickness without finish, for specified periods of fire resistance, and assuming a sand-cement or sand-gypsum finish of minimum 13 mm thickness to each face.)

Type	Solid	Hollow	Solid	Hollow	Solid	Hollow
<b>Width</b>	100	100	150	150	200	200
<b>Fire Resistance/ Hours</b>	2	1	3	2	4	4

### Sound Insulations

Assuming there are no openings, the following typical data is in respect to walls constructed using our Concrete Blocks. (The values related to single leaf walls without plaster and sound reduction factors are interpolated from the mass law curves in the range of 100-3150Hz.)

Width (mm)	100	150	200	250	300
<b>Hollow Blocks</b>	42.5db	45.0db	47.0db	50.0db	-
<b>Solid Blocks</b>	-	47.0db	48.0db	-	-
<b>Thermo Blocks</b>	-	-	56.0db	58.0db	60.0db

### Density

Density of our Blocks do not exceed 2250 kg/m<sup>3</sup>.

### Water Absorption

Water absorption of our Blocks will not exceed 6%.

### Curing

Blocks are cured using the state-of-the-art steam curing system, allowing blocks and tiles to 'cure in their own moisture'. This unique system, unlike conventional steam curing, allows Hitech to produce blocks of higher strength and at substantially faster production speeds. The curing chambers are purposely designed to account for heat transfer to the concrete by maintaining the required humidity. The curing system allows the plant to run in a closed loop. Moisture curing commences immediately after a chamber is filled with the wet products and depalletizing of the cured products commences as soon as the curing cycle is completed for the particular product run. The sealed chambers cannot be opened prematurely thus ensuring the product cannot be removed before its curing time. The system is pre-programmed to ensure that chambers are opened at the exact pre-specified time (usually after 8 hours) when the product is cured. The product, once unloaded, is kept in the yard for natural curing for roughly 48 hours, to gain optimum curing strength after which it is dispatched.

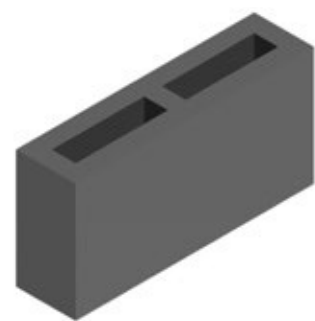
# BLOCKS - HOLLOW BLOCK

All sizes of hollow and solid blocks are available 4 inch, 6 inch, 8 inch, and 10 inch, with both normal and load bearing specifications for each, available in standard.

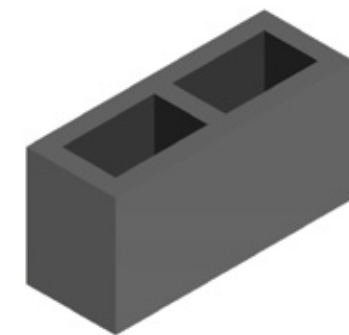
Normal hollow blocks will have a compressive strength of (7-5 N/mm<sup>2</sup>), and special hollow blocks will get above 7 N/mm<sup>2</sup>. Solid blocks are above 12.5 N/mm<sup>2</sup>. For all types of hollow and solid blocks, we are producing the Fire Rated, and Fire Face blocks as per the previous mentioned specifications.

	Sizes	Weight	Density
01	400 x 200 x 100	14.5	2250
02	400 x 200 x 150	17.0	2250
03	400 x 200 x 200	22.5	2250
04	400 x 200 x 250	25.0	2250

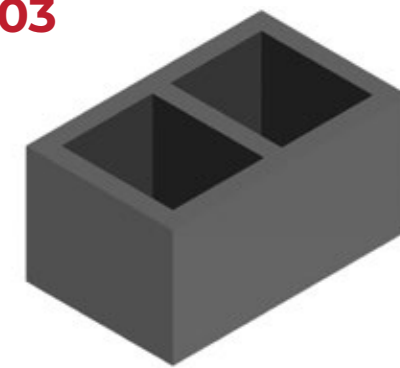
01



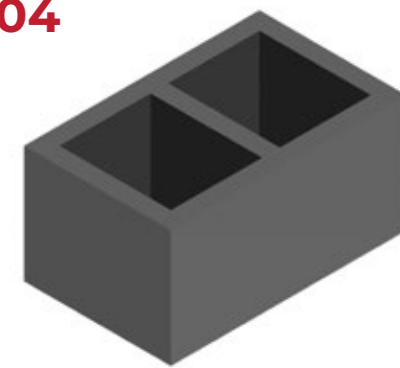
02



03



04



## BLOCKS - SOLID BLOCK

All sizes of hollow and solid blocks are available, 4 inch, 6 inch, 8 inch, and 10 inch, with both normal and load bearing specifications for each, available in standard.

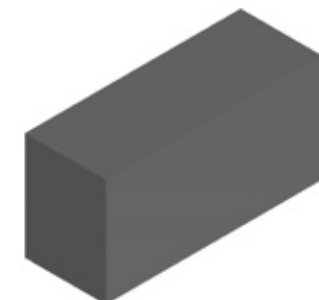
Normal hollow blocks will have a compressive strength of ( 5 - 7 N/mm<sup>2</sup> ), and special hollow blocks will get above 7 N /mm<sup>2</sup>. Solid blocks are above 12.5 N/mm<sup>2</sup>. For all types of hollow and solid blocks, we are producing the Fire Rated, and Fire Face blocks as per the previous mentioned specifications.

	Sizes	Weight	Density
01	400 x 200 x 100	18.0	2250
02	400 x 200 x 150	27.0	2250
03	400 x 200 x 200	36.0	2250
04	400 x 200 x 250	48.0	2250

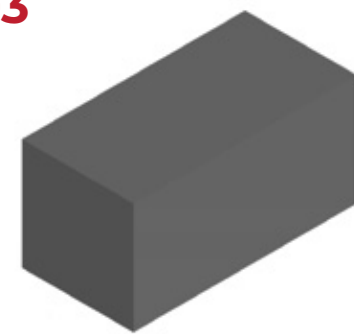
01



02



03



04

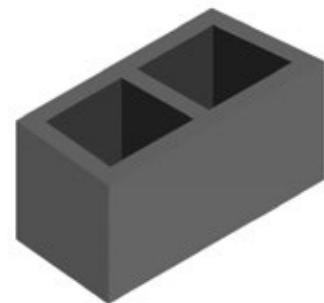


# BLOCKS - HORDY BLOCK

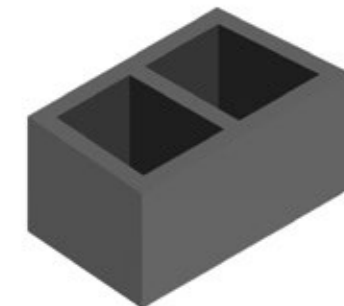
Opened and closed hordy blocks of the sizes of 8 inch, 10 inch, and 12 inch are available with the required specifications. Available in standard.

	Sizes	Weight	Density
01	400 x 200 x 200	14.5	2250
02	400 x 200 x 250	17.0	2250
03	400 x 200 x 300	22.5	2250

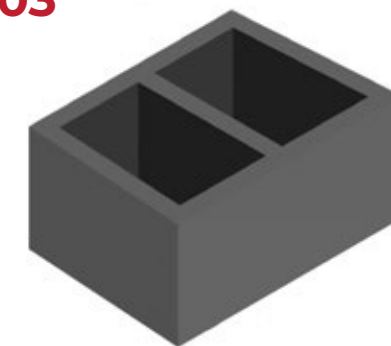
01



02



03

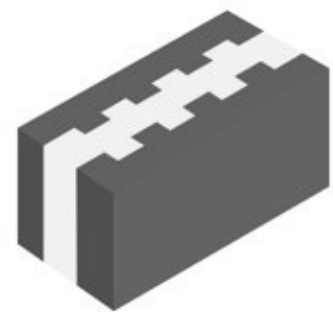


## BLOCKS - THERMAL BLOCK

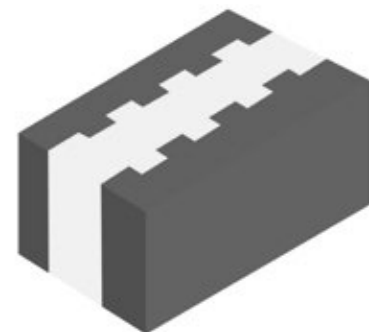
All sizes of thermal block, which complies with ESTIDAMA specifications; are available in our product list. Using the best raw materials in the Northern Emirates crushers, and high density Styrofoam, we can deliver the best quality in the market. Available in standard.

	Sizes	Insulation Thickness
01	400 x 200 x 200	60
02	400 x 200 x 250	70
03	400 x 200 x 250	110
04	400 x 200 x 300	160

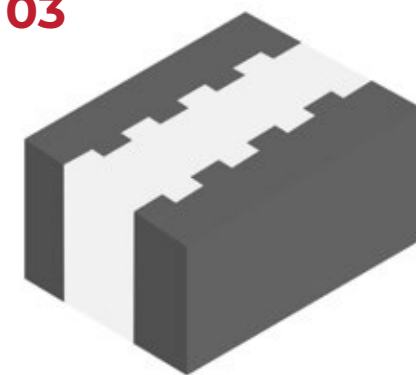
01



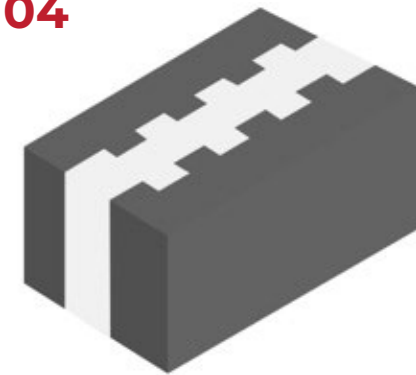
02



03



04



# BLOCKS

Concrete finish kerbs are the practical kerbstones for 'in between' cost effective road edging applications, Available in mid sizes and with a practical finish using the latest British technology, our machines and a team of engineers will provide the highest quality and capacity to our customers.

They come in a wide range of product sizes and finishing to cover all your project requirements. Available in standard.



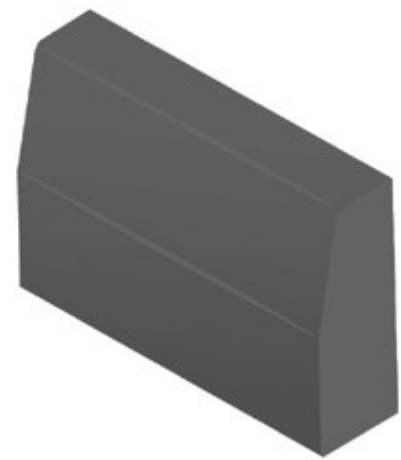
	Sizes	Weight	Type
<b>01</b>	600 x 400 x 150	80.67	Half Batter
<b>02</b>	600 x 420 x 150	84.99	Half Batter
<b>03</b>	600 x 300 x 150	76.35	Upstand
<b>04</b>	600 x 350 x 150	76.35	Half Batter
<b>05</b>	600 x 350 x 200	96.68	Half Batter

	Sizes	Weight	Type
<b>06</b>	600 x 420 x 150	90.61	Bullnose
<b>07</b>	600 x 400 x 150	86.29	Bullnose
<b>08</b>	600 x 380 x 150	81.97	Bullnose
<b>09</b>	600 x 350 x 150	75.49	Bullnose

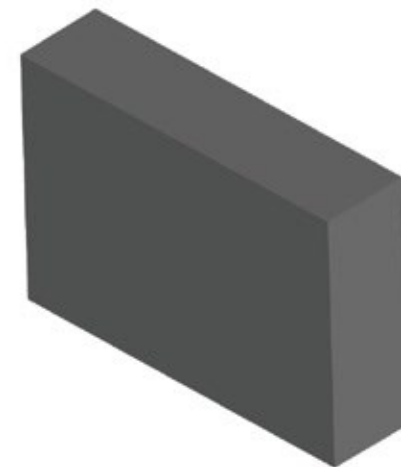
	Sizes	Weight	Type
<b>10</b>	600 x 420 x 150	80.67	Flat Bottom
<b>11</b>	600 x 400 x 150	86.40	Flat Bottom
<b>12</b>	600 x 380 x 150	82.08	Flat Bottom
<b>13</b>	600 x 350 x 150	75.60	Flat Bottom

	Sizes	Weight	Type
<b>14</b>	914.4 x 254 x 150	80.91	Bullnose
<b>15</b>	914.4 x 254 x 150	76.99	Bullnose
<b>16</b>	914.4 x 254 x 150	76.35	Bullnose
<b>17</b>	914.4 x 254 x 150	83.42	Bullnose

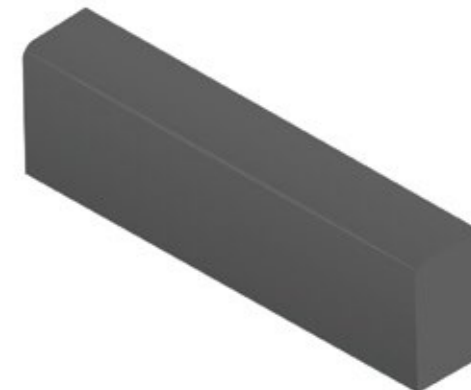
**01**



**10**

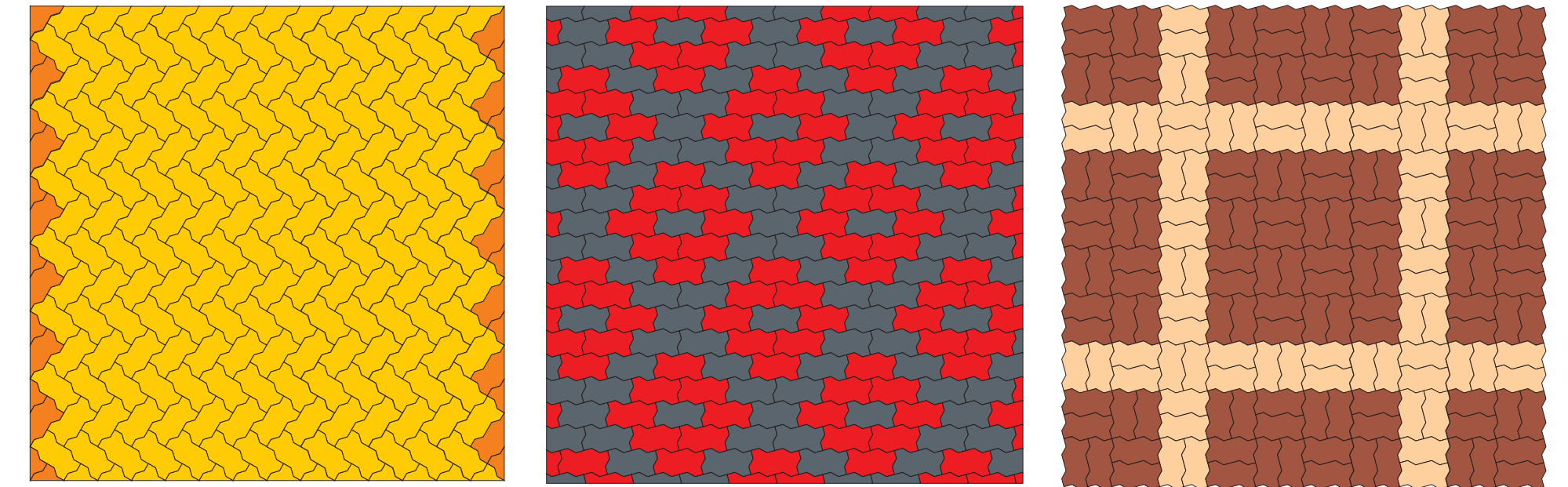


**17**



# INTERLOCKING TILES - UNI BLOCKS

Tiles from Hitech can help you to create a wide range of designs and ideas for your drive way and open areas. Available in standard, shot blasted, single layer and double layer, with pioneer quality assured by the Hitech quality team, and the latest Germany heavy duty machinery. Production capacity of 9500m2 / day; or 285,000m2 / month places us ahead of other tiles producers in the UAE.



UNI SHAPE BLOCK		
	Sizes	Weight
01	225 x 113 x 60	3.57
02	225 x 113 x 80	4.70

UNI SHAPE HALF BLOCK		
	Sizes	Weight
03	113 x 113 x 60	1.75
04	113 x 113 x 80	2.30

UNI SHAPE STARTER BLOCK		
	Sizes	Weight
05	315 x 174 x 60	4.57
06	315 x 174 x 80	6.00

01



02



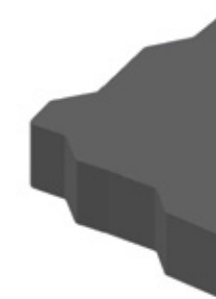
03



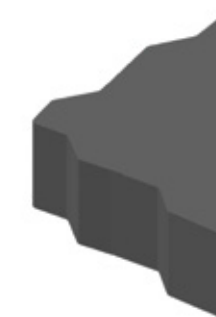
04



05



06

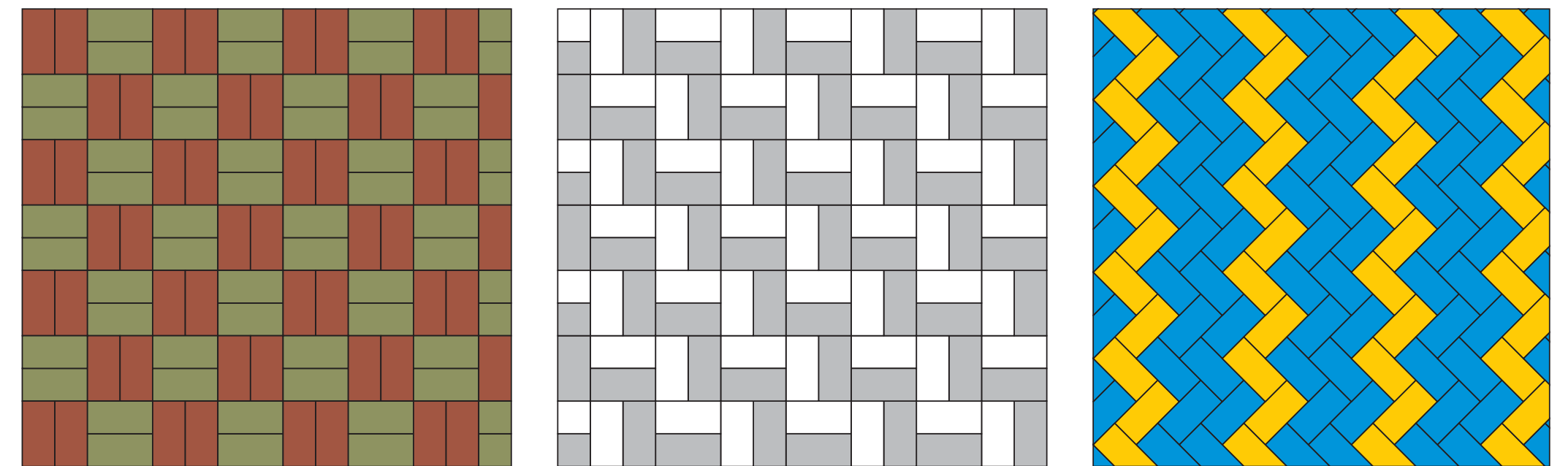


# INTERLOCKING TILES

High salt content soil has a strong corrosive effect on concrete, therefore; Hitech can provide special, high, and differentiated specifications pavers specially produced for special high salty soils areas, with less than 3.0% water absorption and high compressive strength. Available in standard, shot blasted, single layer and double layer.

	Sizes	Weight	Type
01	80 x 80 x 60	0.96	Cube
02	80 x 80 x 80	1.28	Cube
03	100 x 100 x 60	1.40	Cube
04	100 x 100 x 80	1.90	Cube
05	150 x 150 x 60	3.40	Square
06	160 x 160 x 60	3.80	Square
07	160 x 160 x 80	4.00	Square
08	200 x 200 x 60	6.00	Square
09	200 x 200 x 80	8.00	Square
10	300 x 300 x 60	13.50	Square
11	200 x 100 x 60	2.70	Rectangle

	Sizes	Weight	Type
12	200 x 100 x 80	3.90	Rectangle
13	200 x 100 x 100	4.85	Rectangle
14	240 x 160 x 60	5.76	Rectangle
15	240 x 160 x 80	7.68	Rectangle
16	300 x 100 x 80	6.00	Rectangle
17	300 x 150 x 80	9.00	Rectangle
18	300 x 200 x 80	12.00	Rectangle
19	400 x 200 x 60	12.00	Rectangle
20	400 x 200 x 80	16.00	Rectangle
21	600 x 300 x 60	26.00	Rectangle
22	600 x 400 x 80	48.00	Rectangle

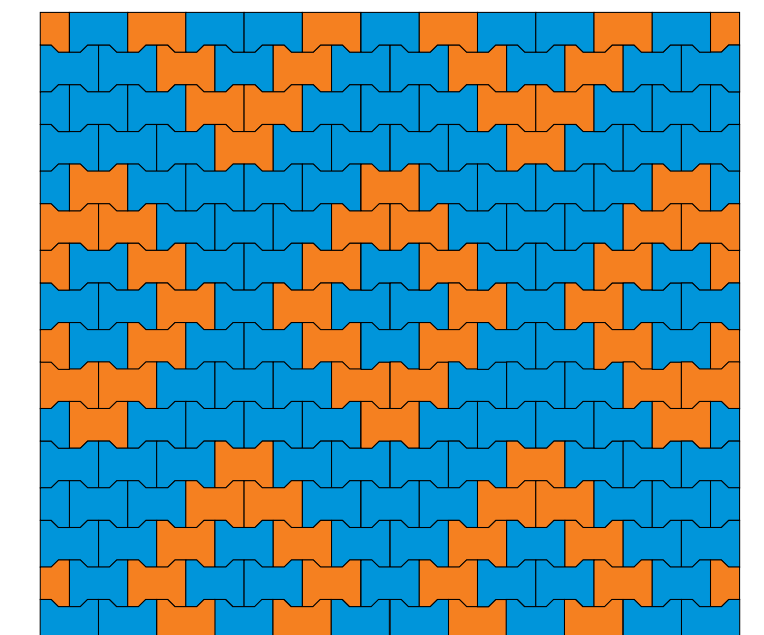
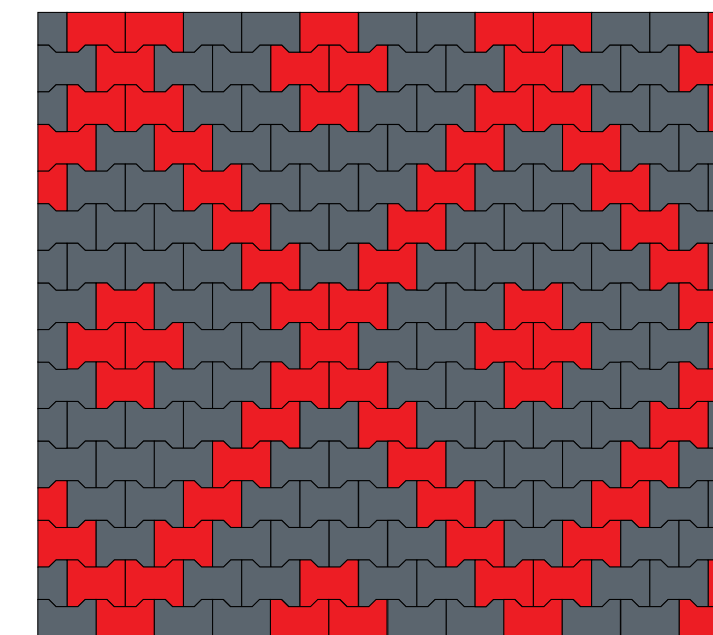
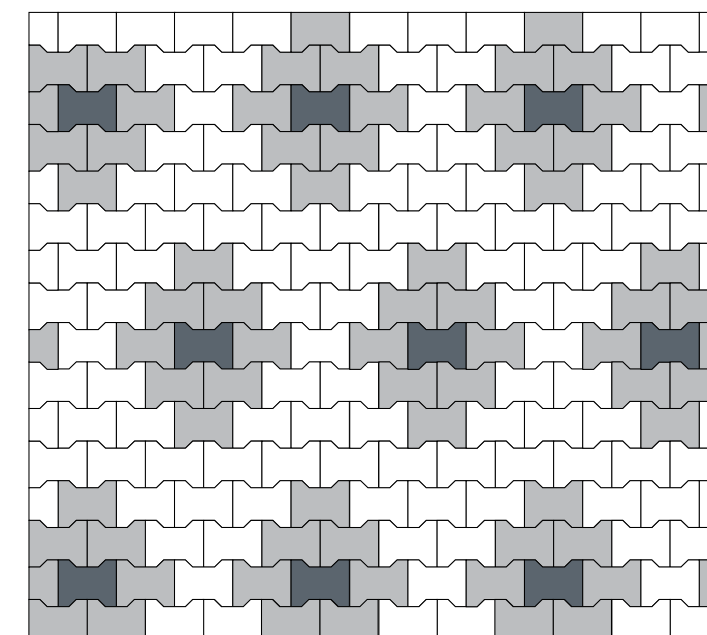
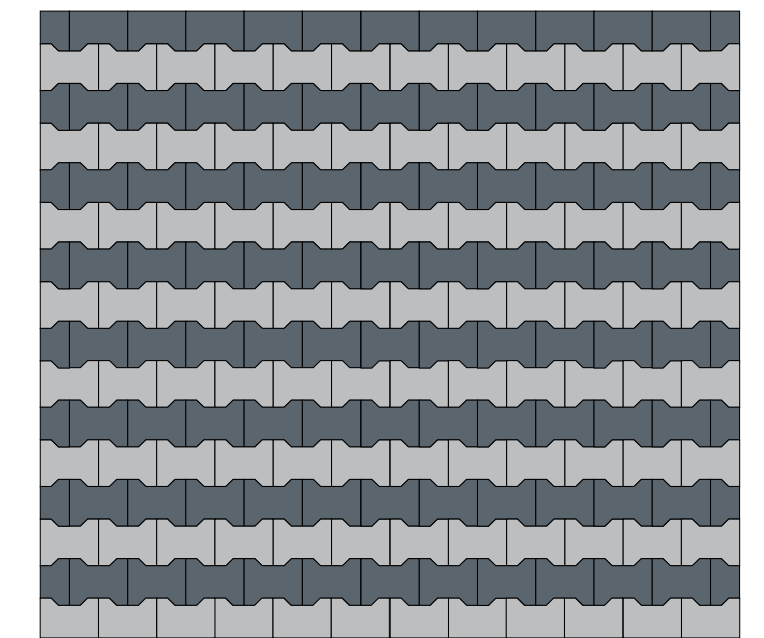
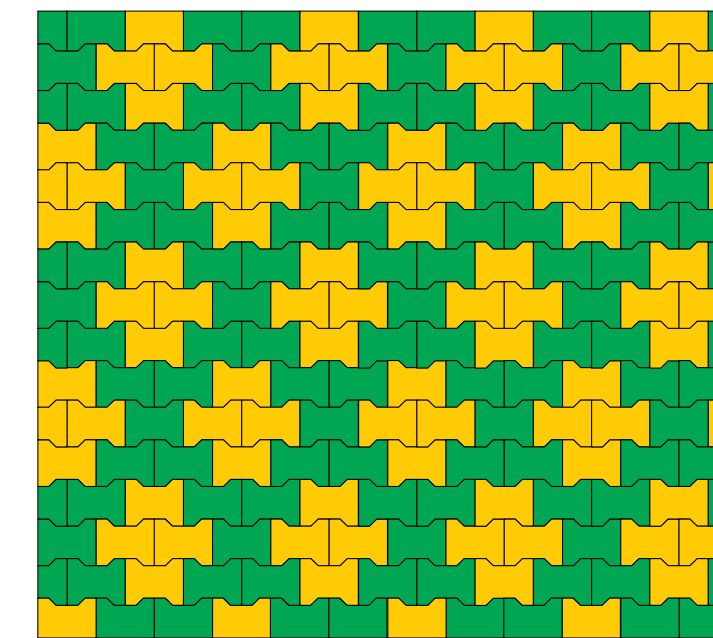
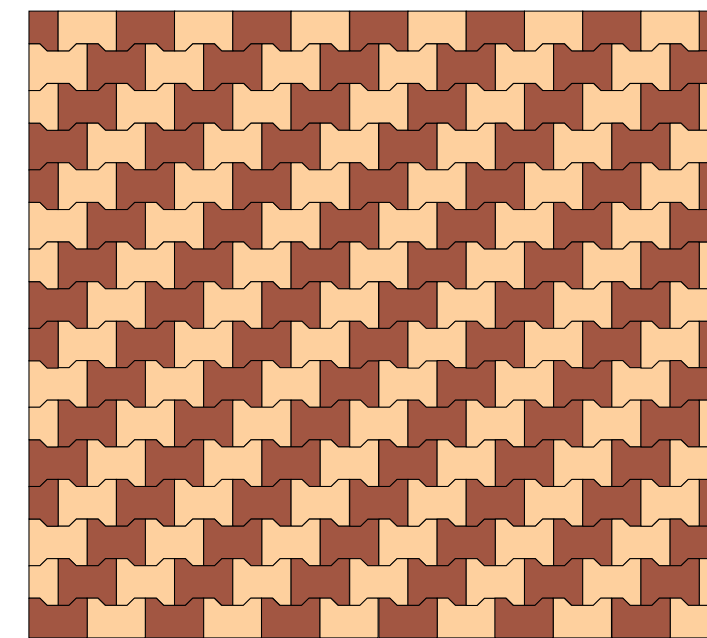
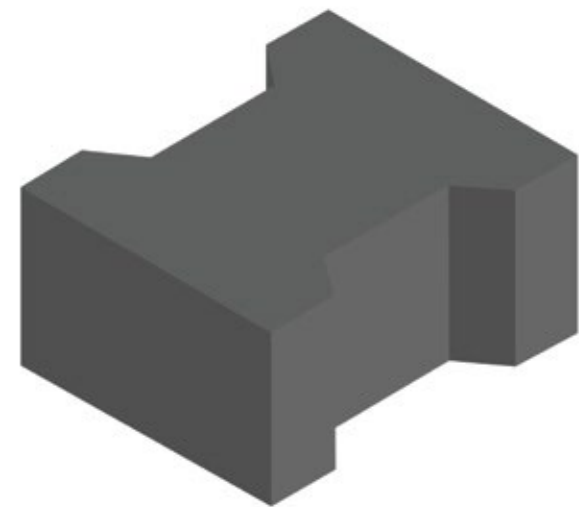


# INTERLOCKING TILES - BEHATON

The interlocking Behaton paver is a time-tested interlocking concrete paver. Due to its 'by now almost classic' form, a surface laid with this block takes up high loads without any deformation being caused to the surface. Available in standard, shot blasted, single layer and double layer.

	Sizes	Weight
01	200 x 163 x 60	3.50

01



# INTERLOCKING TILES - VARIO

High salt content soil has a strong corrosive effect on concrete, therefore Hitech can provide special, high, and differentiated specification pavers specially produced for special high salty soils areas, with less than 3.0% water absorption and high compressive strength. Available in standard, shot blasted, single layer and double layer.

	Sizes	Weight	Type
01	60	4.70	Octagon
02	80	6.20	Octagon
03	60	2.80	I-Block
04	80	3.80	I-Block



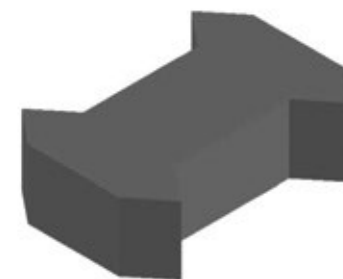
01



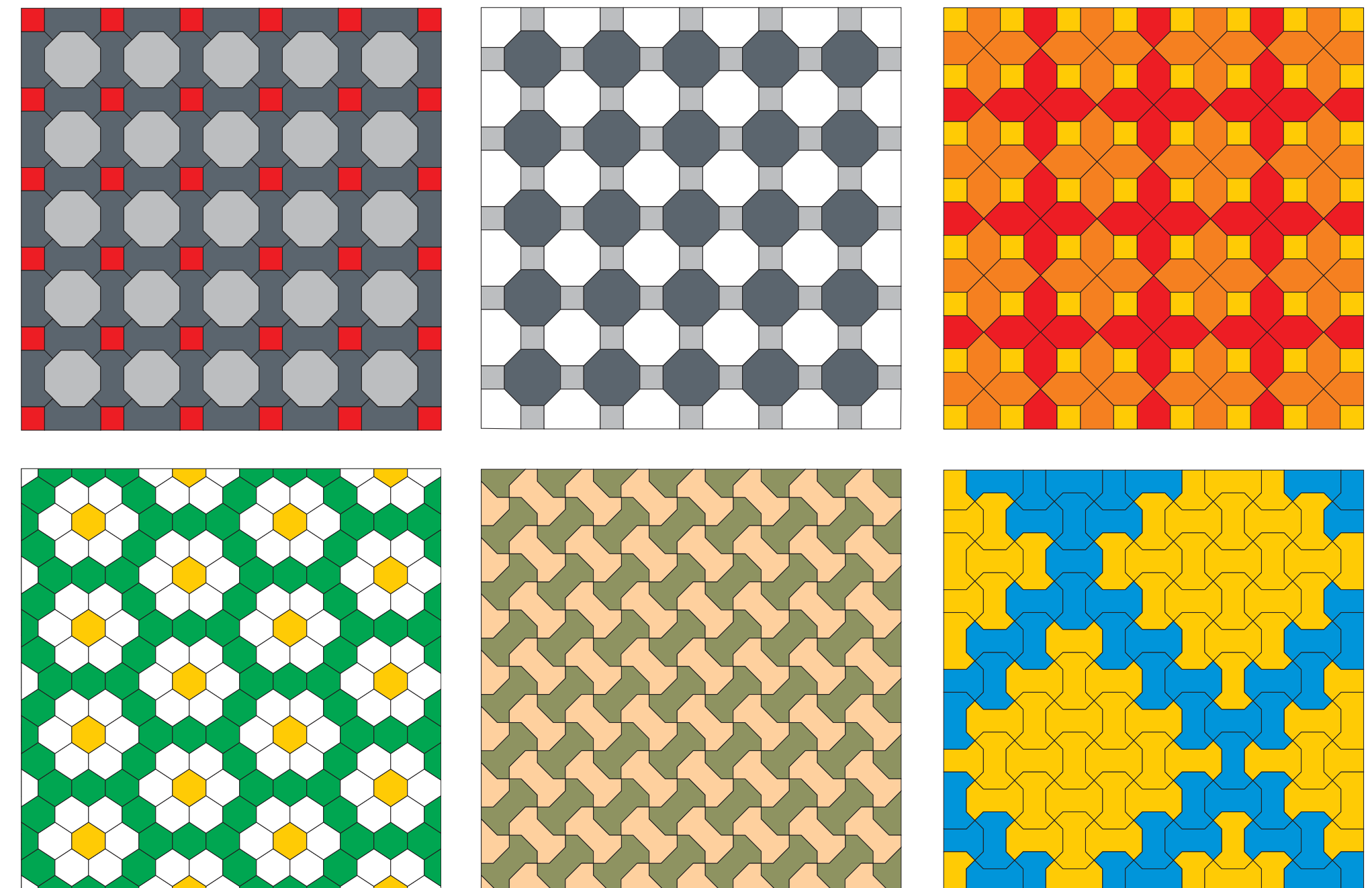
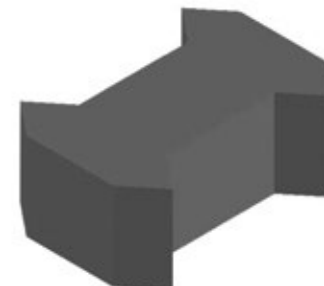
02



03



04





**BLOCKS AND  
PAVING TILES  
PROJECTS**



## MOSQUE AND QURAN CENTER

The Mosque and Quran Center will become a community hub. Its traditional design belies the modern techniques that were used in its construction, with only the finest quality materials being used.

## EMIRATI HOUSING COMMUNITY

This project on Yas Island cements our commitment to our Emirati families with acres of luxury and comfort in our range of villas that provide world class community facilities.





## HIGHLAND RESORT VILLAS

Highland resort villas are in the completion stage for 147 luxury Villas (of 5 different types/design). The villas have a list of luxury amenities and embody an Arabian feel to them for a full Abu Dhabi experience.

## AL REEF VILLAS

Al Reef Villas development is poised to accommodate over 16,000 residents, along with visitors. Another key characteristic of the project is its strategic location near the beautiful Al Raha beach and Abu Dhabi International Airport.





UNIVERSITÉ PARIS SORBONNE  
Abou Dhabi

## HARDSCAPING FOR REEM ISLAND

Hitech Block Works has provided all the interlocking tiles for the hardscaping of Reem Island, this includes all common walkways and footpath areas for the island even if they have not yet been developed. This ensures Reem Island can naturally grow and provide ease of pedestrian access.

## BLOCK WALL ON REEM WALL

When a large block wall was needed at Najmat on Reem Island, Hitech Block Works was there. Several levels of hollow core blocks went into the construction of the durable wall. This wall is just another part of Hitech's Reem Island story.





## EMIRATI HOUSING DEVELOPMENT AT JEBEL HAFEET

Hitech Block Works interlocking tiles, both inside and out. The interlocking tiles were specially made for this project to both complement the chosen palette and provide a durable surface for homeowners.

## AIN AL FAYDHA GOVERNMENT VILLAS

Part of Hitech's ongoing commitment to supporting government initiatives providing of housing for Emirati families, is it's involvement in the Ain Al Fayda development. Interlocking tiles were provided and laid for several thousand villas.



# OTHER PROJECTS FROM HITECH BLOCK WORKS

Al Reem Island Mixed Use Development

Golf Gardens at Khalifa City-A

Al Rayyana Golf Gardens

170 Villas at Mohd. Bin Zayed City

International Shooting Club at Khalifa City-A

Workers Village at Mussafah

Al Watani Residential Development

SEHA Hospital at Mohd. Bin Zayed City

Motor World

Al Falah Community Development





## QUALITY POLICY

At Hitech Concrete Products L.L.C., our customer oriented approach and core company values are central to our professional philosophy. The foundations of our success are our expertise and determination to meet our clients' needs by carefully selecting a team of dedicated professionals with extensive experience and distinguished qualifications. We are committed to give priority to our clients' satisfaction taking into consideration time and financial-constraints, and to follow international standards such as PCI, ACI and BS.

The management & staff of Hitech Concrete Products L.L.C., undertakes to:

- Strive to achieve client satisfaction by delivering quality products on time.
  - Perform as per its obligation.
  - Provide appropriate tools, equipment, operational processes, safe system of work covering all our activities and support required to ensure success.
  - Establish a constructive relationship with our customers, suppliers and contractors and enhance their performance as they are important in achieving our QMS aims. Only through the cooperative effort of all can the best possible QMS record be achieved.
- Implement and maintain quality management system requirements and use the management system to continually improve our services and deliverables.
- Communicate this policy along with the QMS manual and the related procedures to all Hitech Concrete Products L.L.C. staff and sub-contractors and ensure they understand it through continuous training and auditing programs.

Management review meetings shall oversee the proper implementation of this system and set directions and priorities for the different components of the organization.





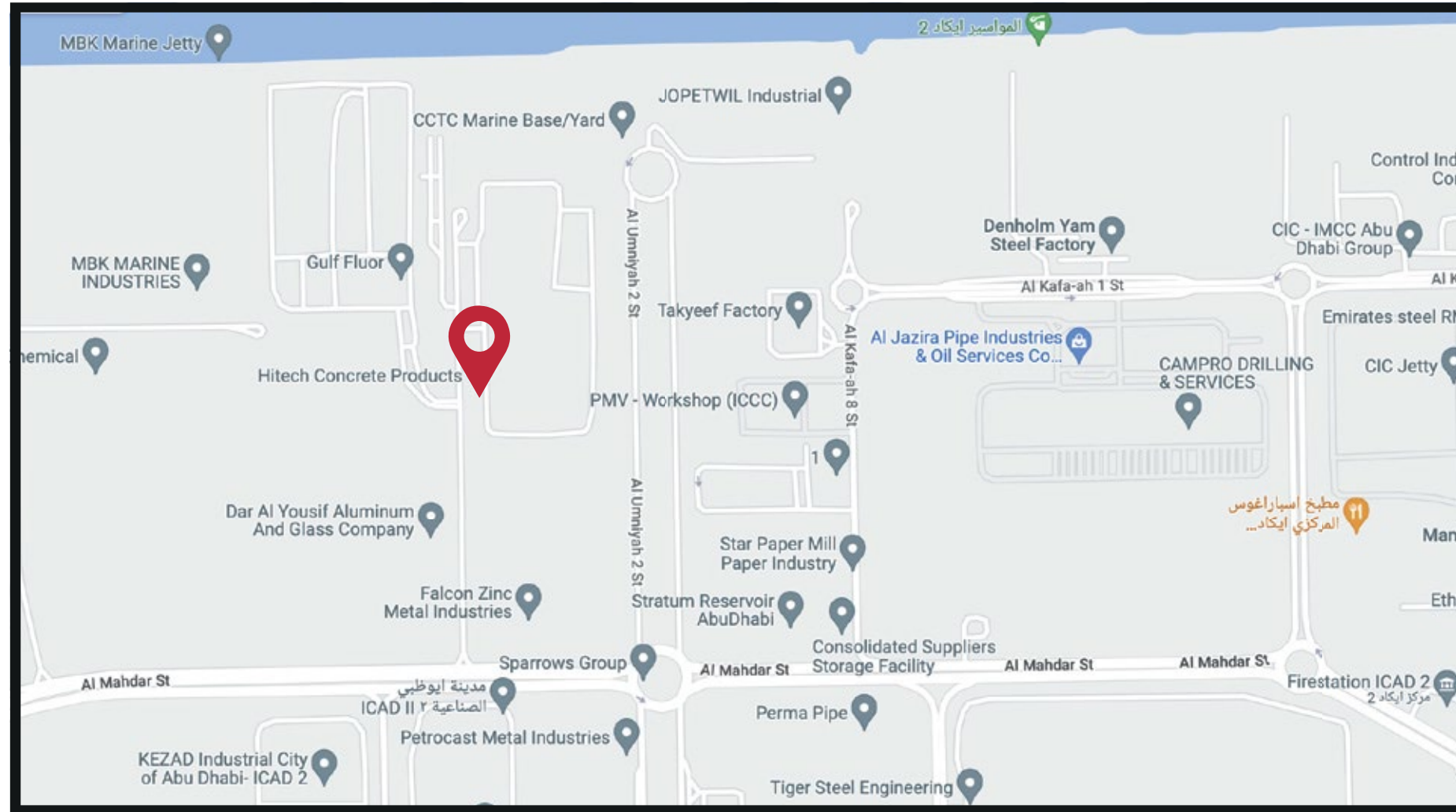
# OUR PEOPLE

Hitech believes that the core philosophy for growth, quality and customer satisfaction is the result of investing in its employees throughout development, training and continuous improvement. Our people are the building blocks of our company and its continued success over the years.

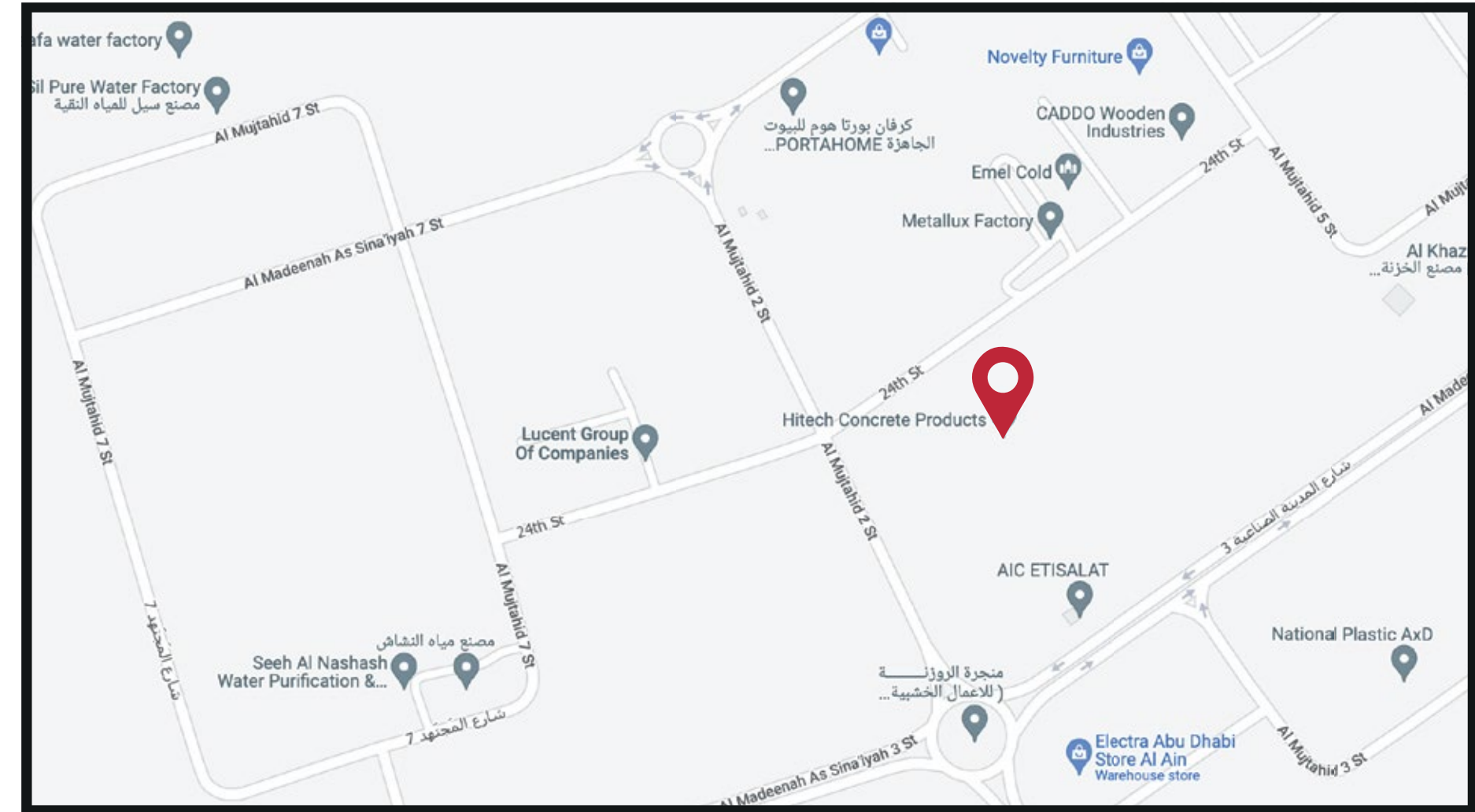
We believe that they deserve the best work environment - one that offers opportunity for growth and learning at every stage and seeks to enhance and hone the skill sets, competence and ability of every employee at every stage of the company's process and progress. Along with visionary senior management, experienced project managers, engineers and proven labor, we consistently keep our people and their happiness at the forefront of our business dealings.



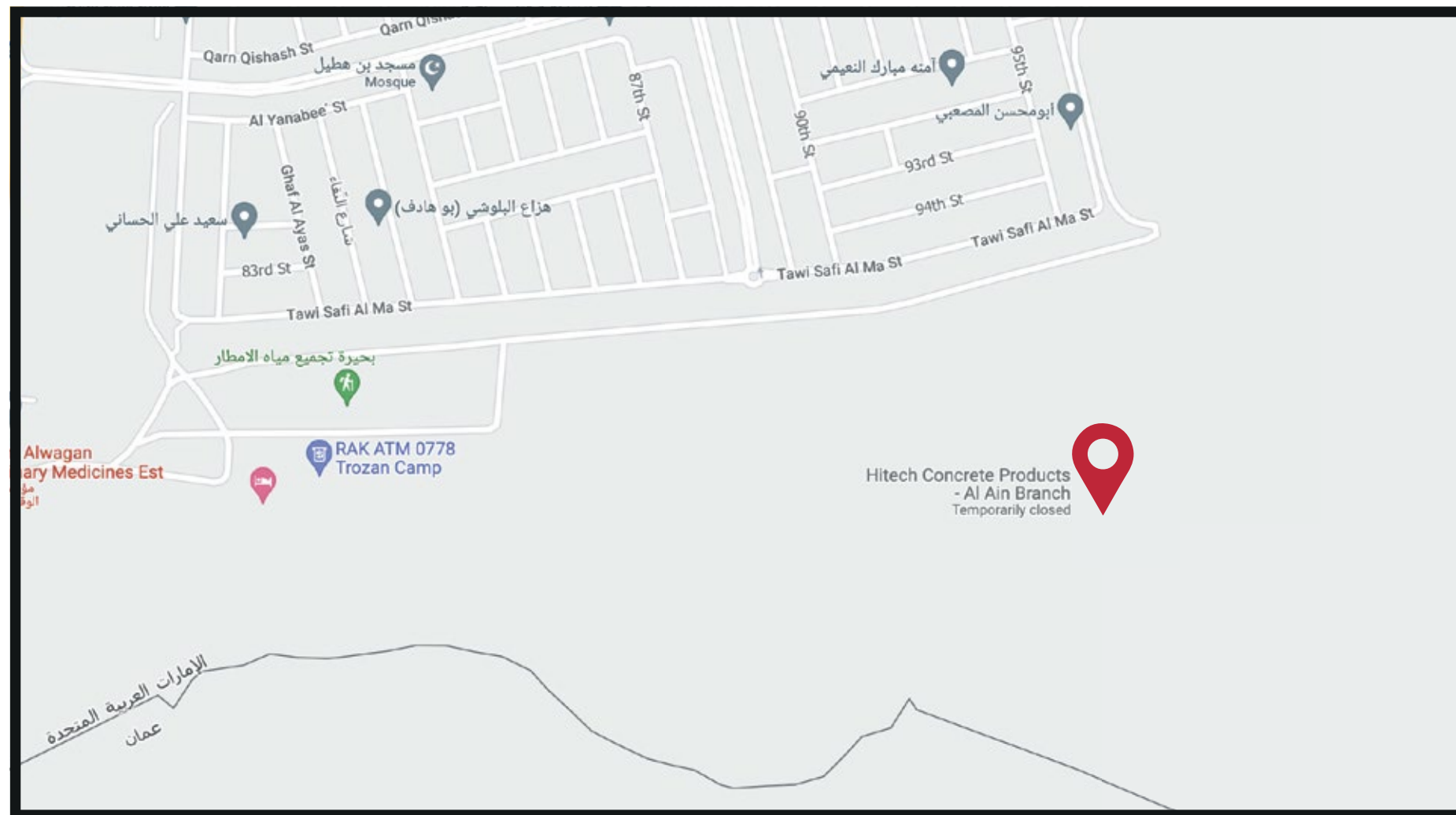
# OUR LOCATIONS



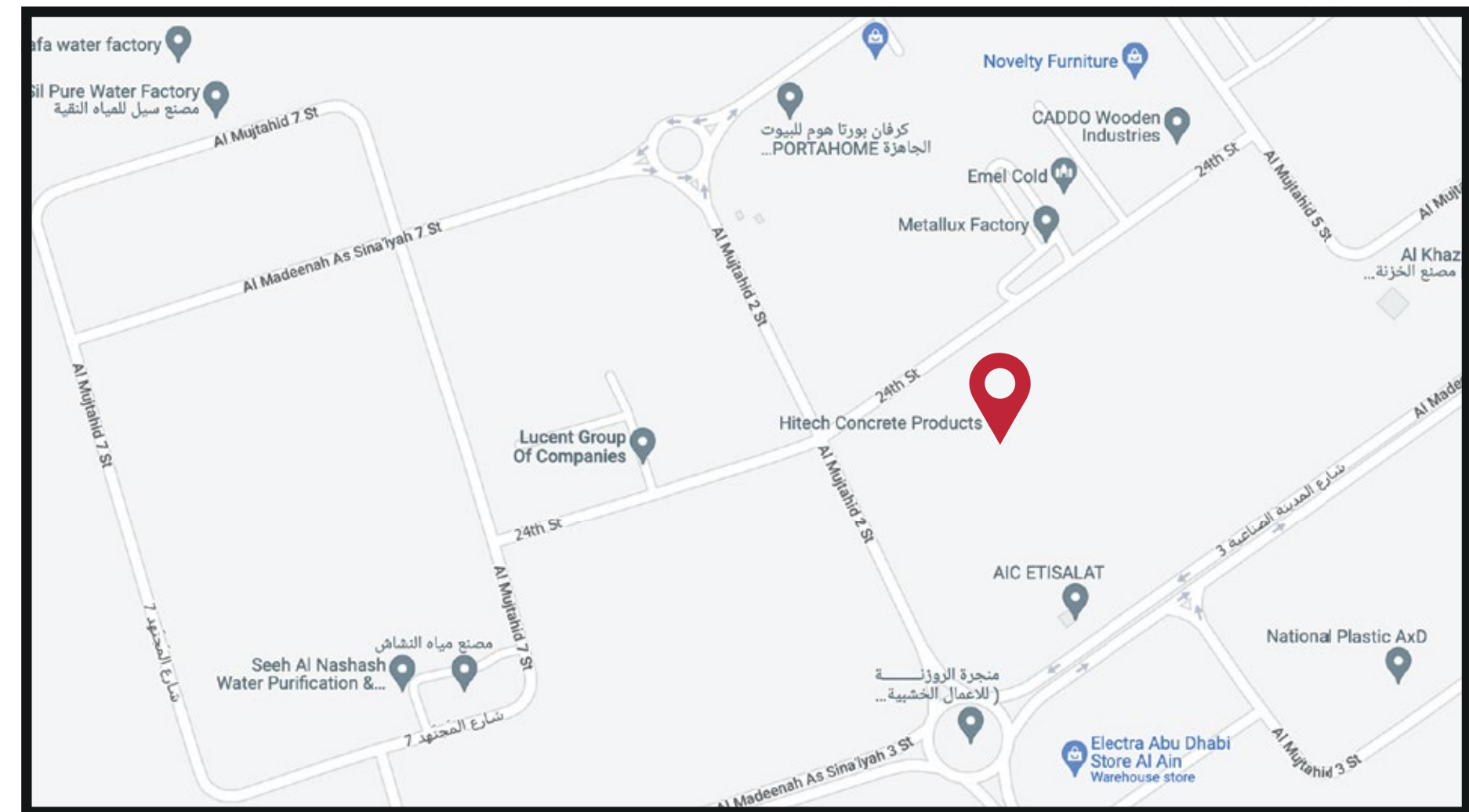
Hitech Concrete Products L.L.C (Abu Dhabi Main HO)



Hitech Concrete Products Al Ain Branch L.L.C.



Hitech Concrete Products L.L.C (OLD Al Ain factory)



Hitech Concrete Products L.L.C (BR Dubai) (DIC factory)





P.O. Box 109200, Abu Dhabi, UAE

T +971 2 550 9112 | F +971 2 550 1227  
info@hitechconcrete.ae | www.hitechconcrete.ae